

**Working principle**




**Technical parameters**


**Product purpose**


**Flow scope(gas)**


**Flow range(Saturated steam) kg/h**







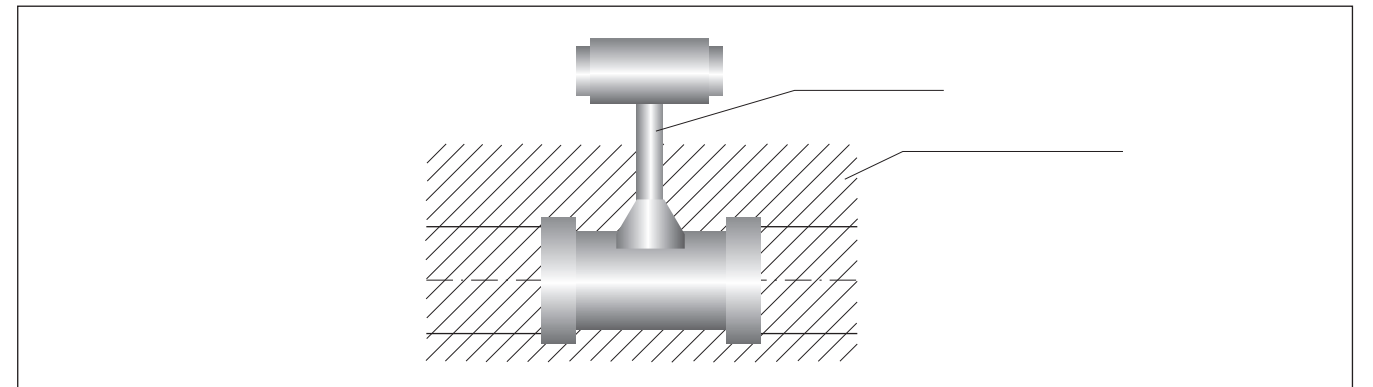
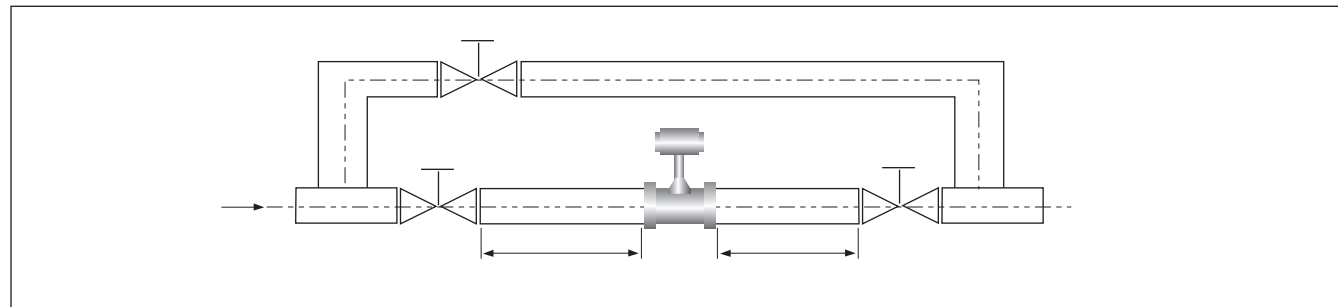


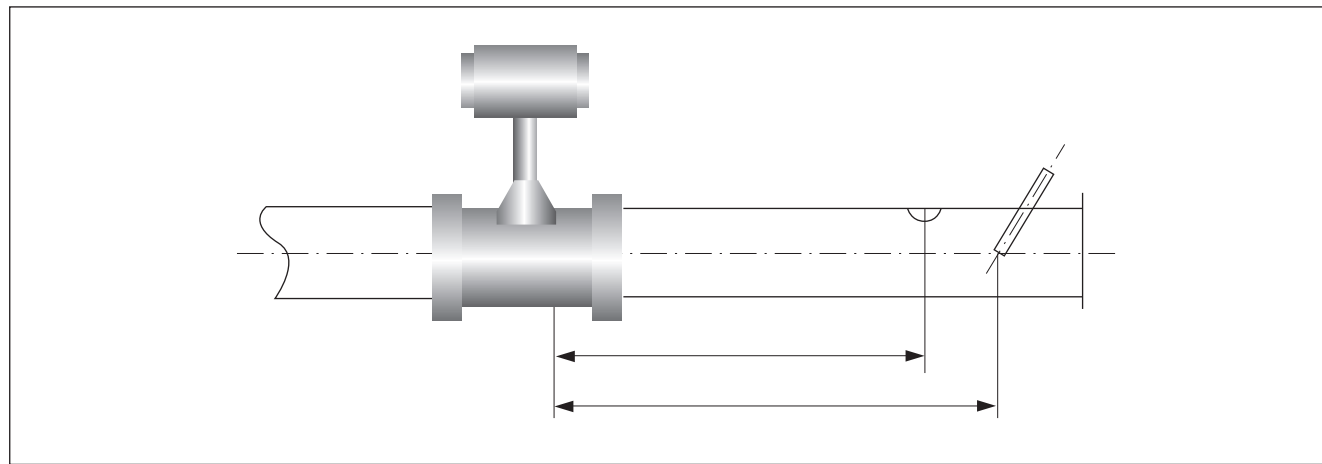
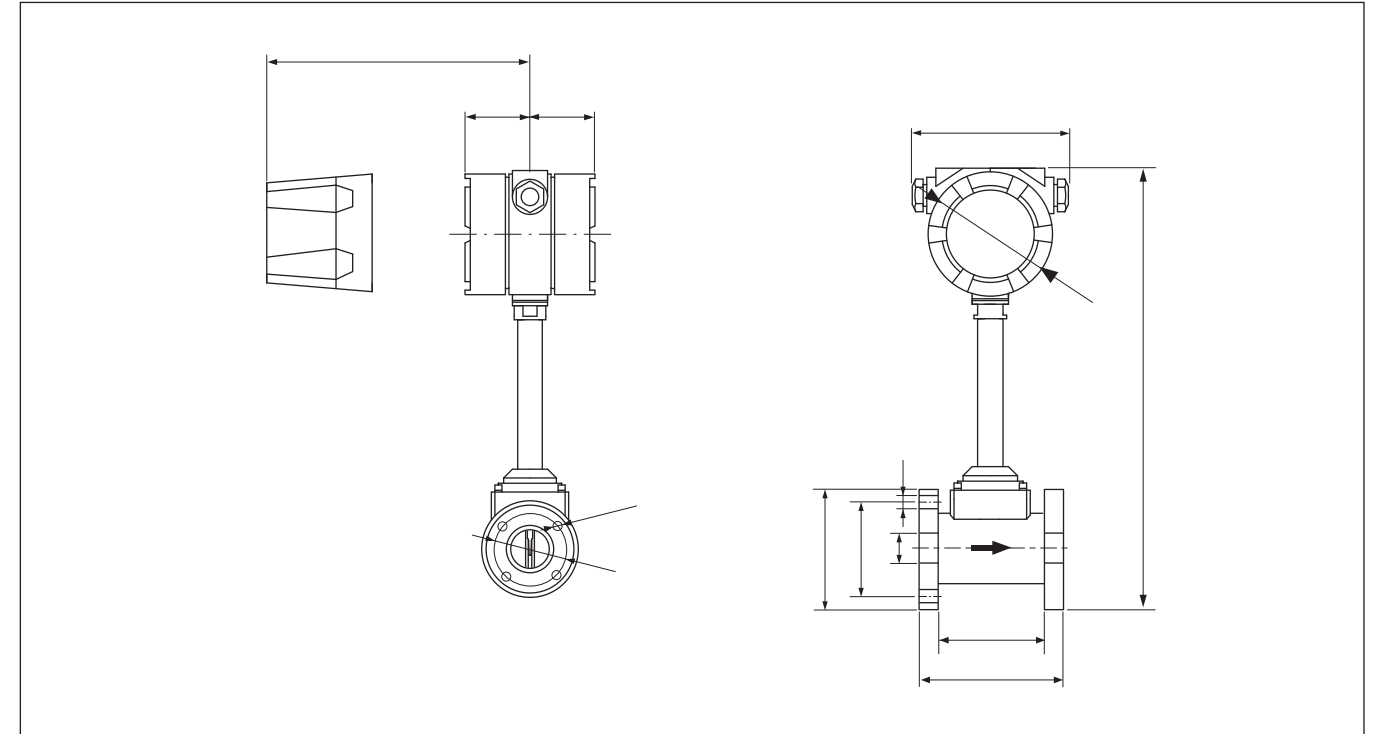


**Flow range(over-hot steam t/h)**



**The installation of vortex street flow sensor**





									∅
									∅
									∅
									∅
									∅
									∅
									∅
									∅
									∅
									∅